

Hollymatic 200 Forming & Portioning Machine

FORM UP TO 1900 PATTIES PER HOUR WITH THE RELIABLE HOLLYMATIC 200

The Hollymatic 200 is an economical and reliable food forming machine. Easily interchangeable mold plate assembly lets you select a variety of patty shapes and weight. The 200 forms patties from the most difficult products.

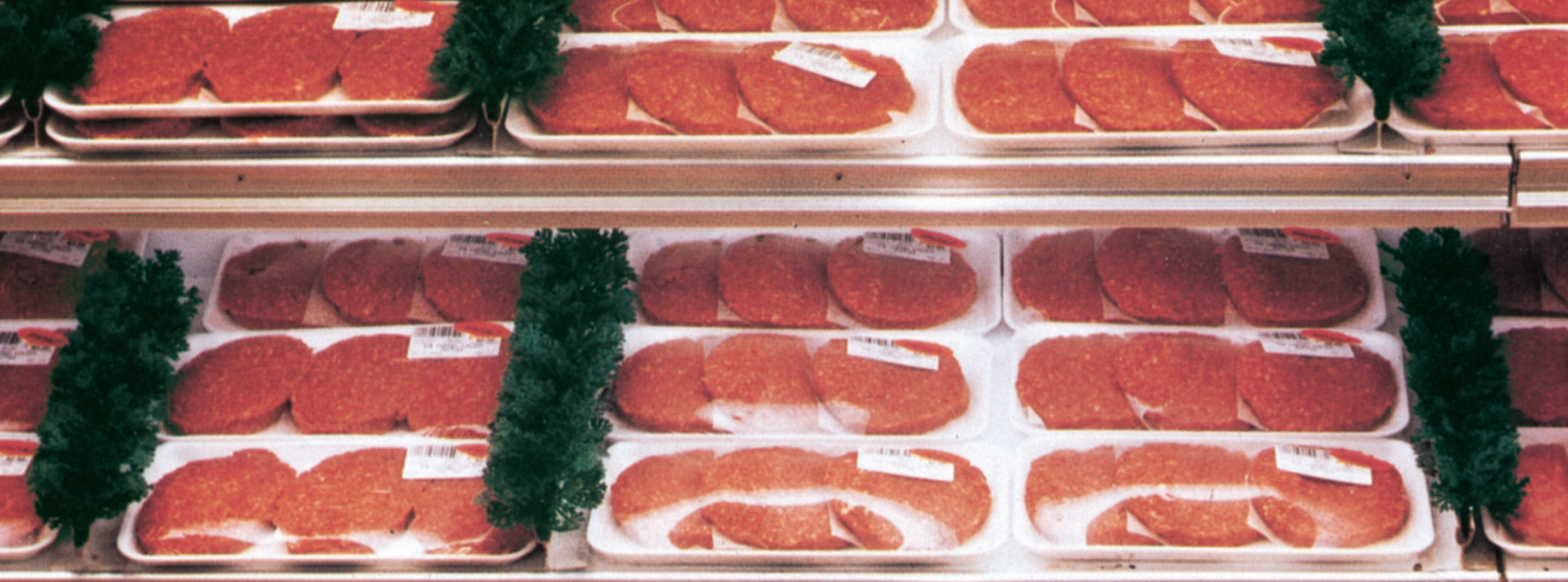
- ▶ 1 oz. to 5- $\frac{1}{8}$ oz. in weight, $\frac{3}{16}$ " to $\frac{3}{4}$ " thick and up to 4- $\frac{3}{4}$ " diameter.
- ▶ Automatic paper interleaving system.
- ▶ Exact and consistent size, weight, and shape.
- ▶ Adjustable patty compression.
- ▶ Low cost, durable and easy operation.
- ▶ The 200 is ideal for supermarkets, drive-ins, institutions, schools and cafeterias.

For more information contact Hollymatic or your local authorized Hollymatic Dealer today!



Hollymatic®

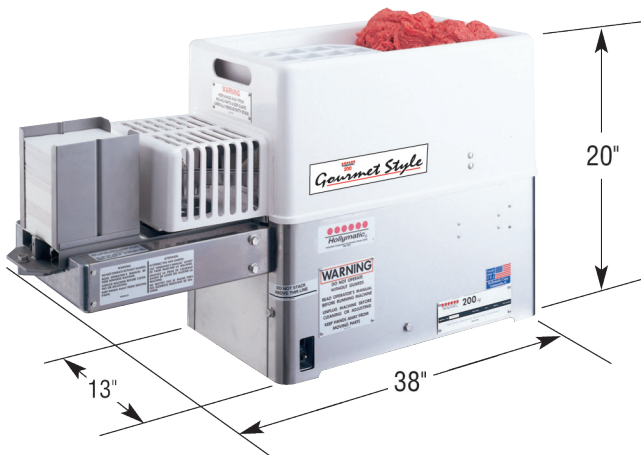
FOOD PROCESSING EQUIPMENT SINCE 1937



FEATURES

- Low Cost, High Durability, And Ease Of Operation
- Up To 1900 Patties Per Hour
- Continuous, Automatic Paper Feed
- Easily Interchangeable Mold Plate Assembly
- One-Piece Safety Interlocked Feed Tray and Guard
- Adjustable Patty Compression

ALWAYS USE GENUINE
HOLLYMATIC PATTY PAPER



SPECIFICATIONS

MOTOR: 115 volts, 60 Cycle, Single Phase, 8.6 A.

FINISH: Sanitary Metals and Plastic.

MOLD PLATE: $\frac{3}{16}$ " to $\frac{5}{16}$ " Thickness, 4.5" Max. Diameter.
 $\frac{3}{8}$ " to $\frac{3}{4}$ " Thickness, 4.7" Max. Diameter.

SPEED: Choice of 1200, 1600, or 1900 patties per hour.

MOLDING CAPACITY: 1 oz. up to 5- $\frac{1}{2}$ oz. per stroke.

NET WEIGHT: 125 lbs.

PAPER FEED: Choice of 4- $\frac{1}{2}$ ", 5", 5- $\frac{1}{2}$ ".

OPTIONS:

- Stainless Steel Stand, With Casters
- 220 Volts, 50 cycle, 1 phase.